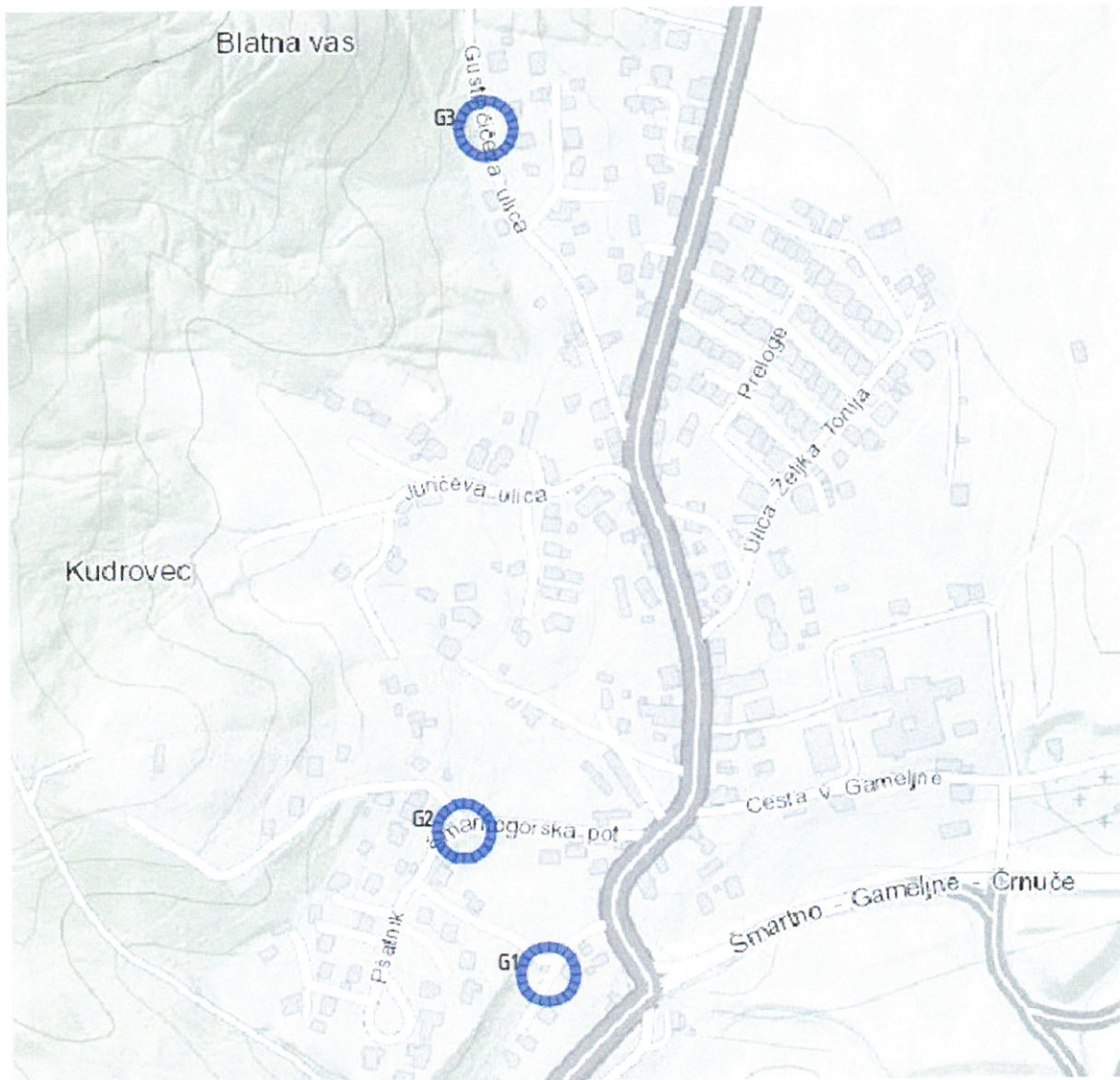
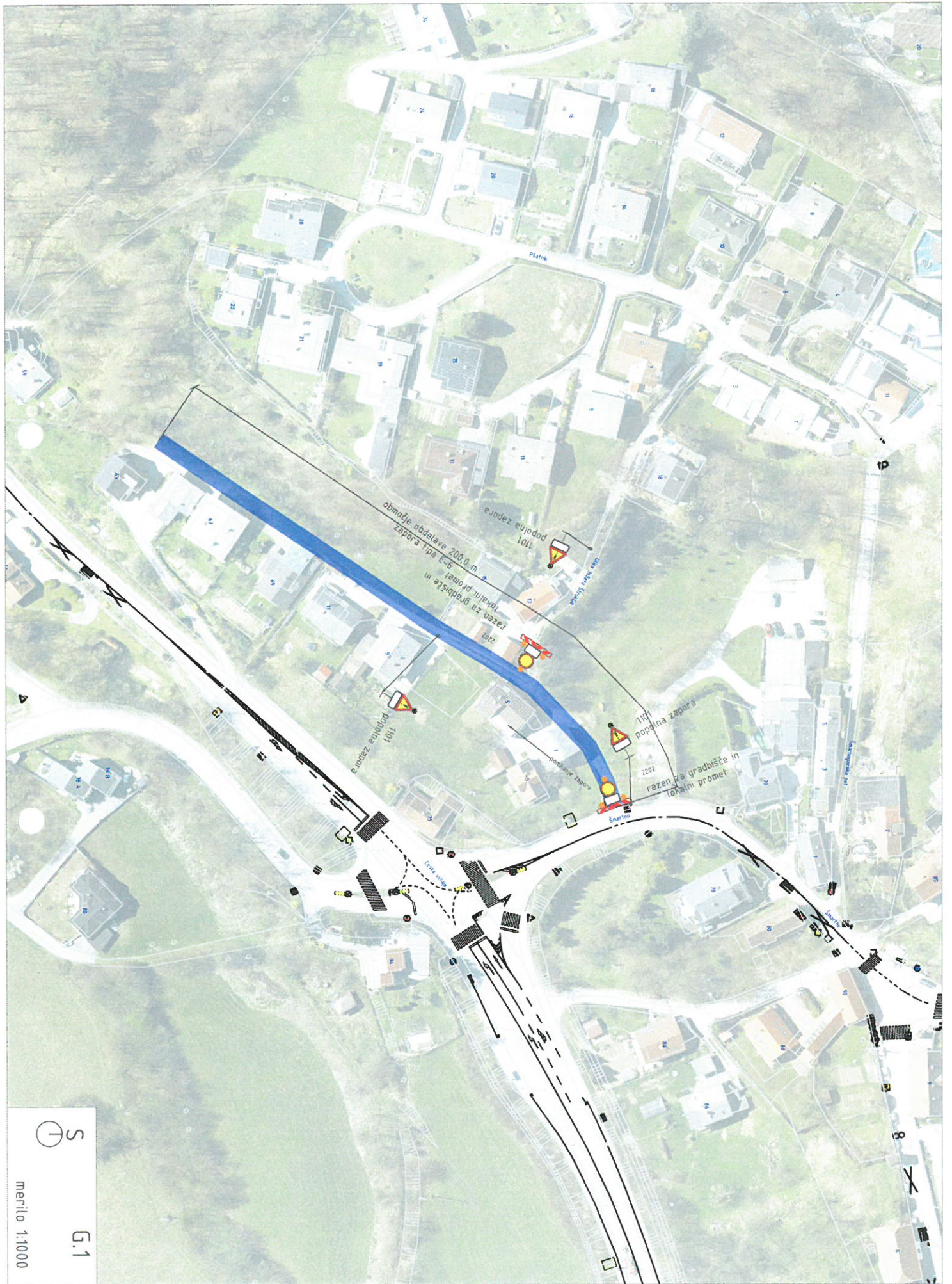


G.0

PREGLEDNA SITUACIJA



Šmartno		004.0305		
---------	--	----------	--	--



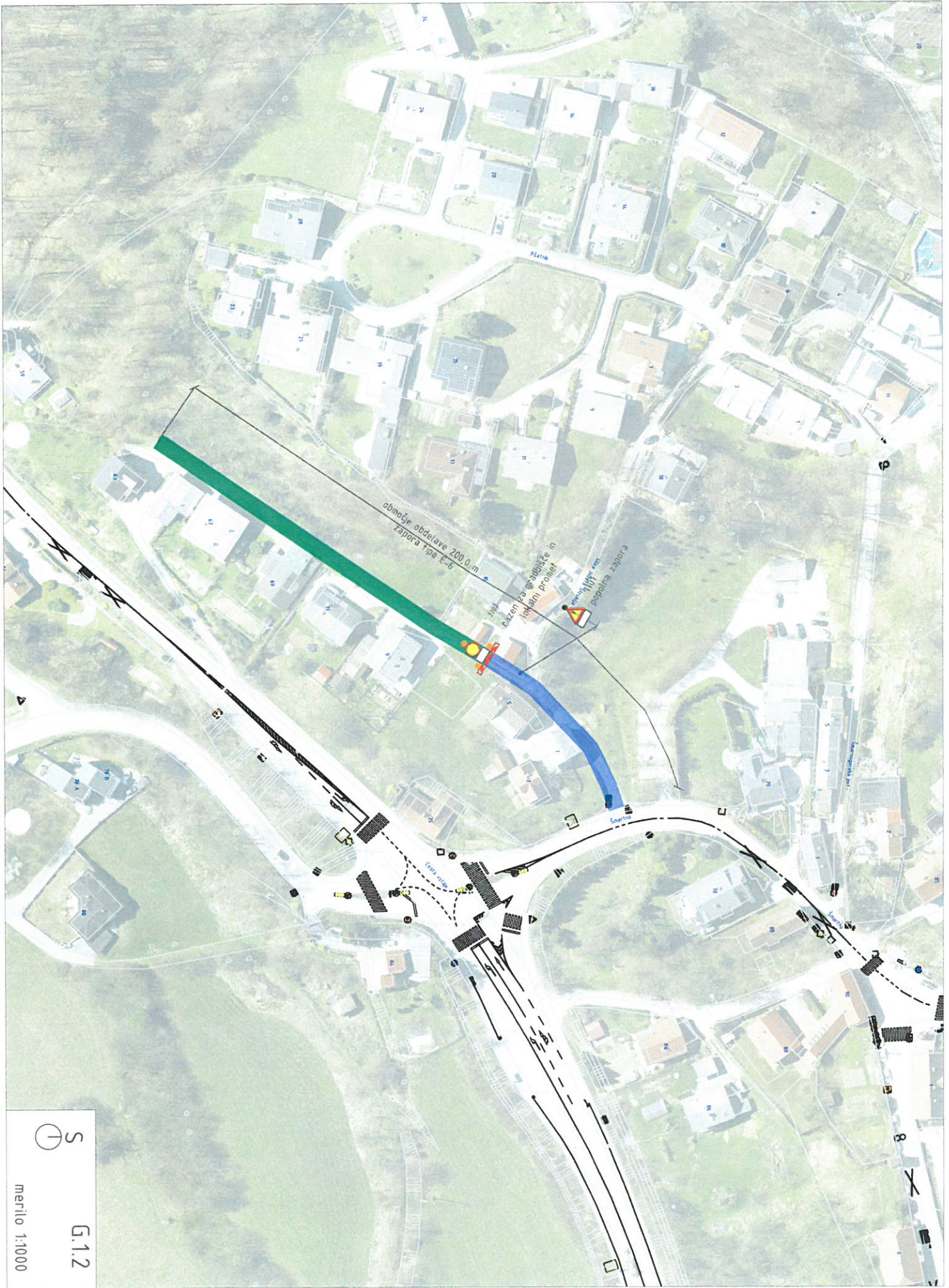
G.1

merilo 1:1000



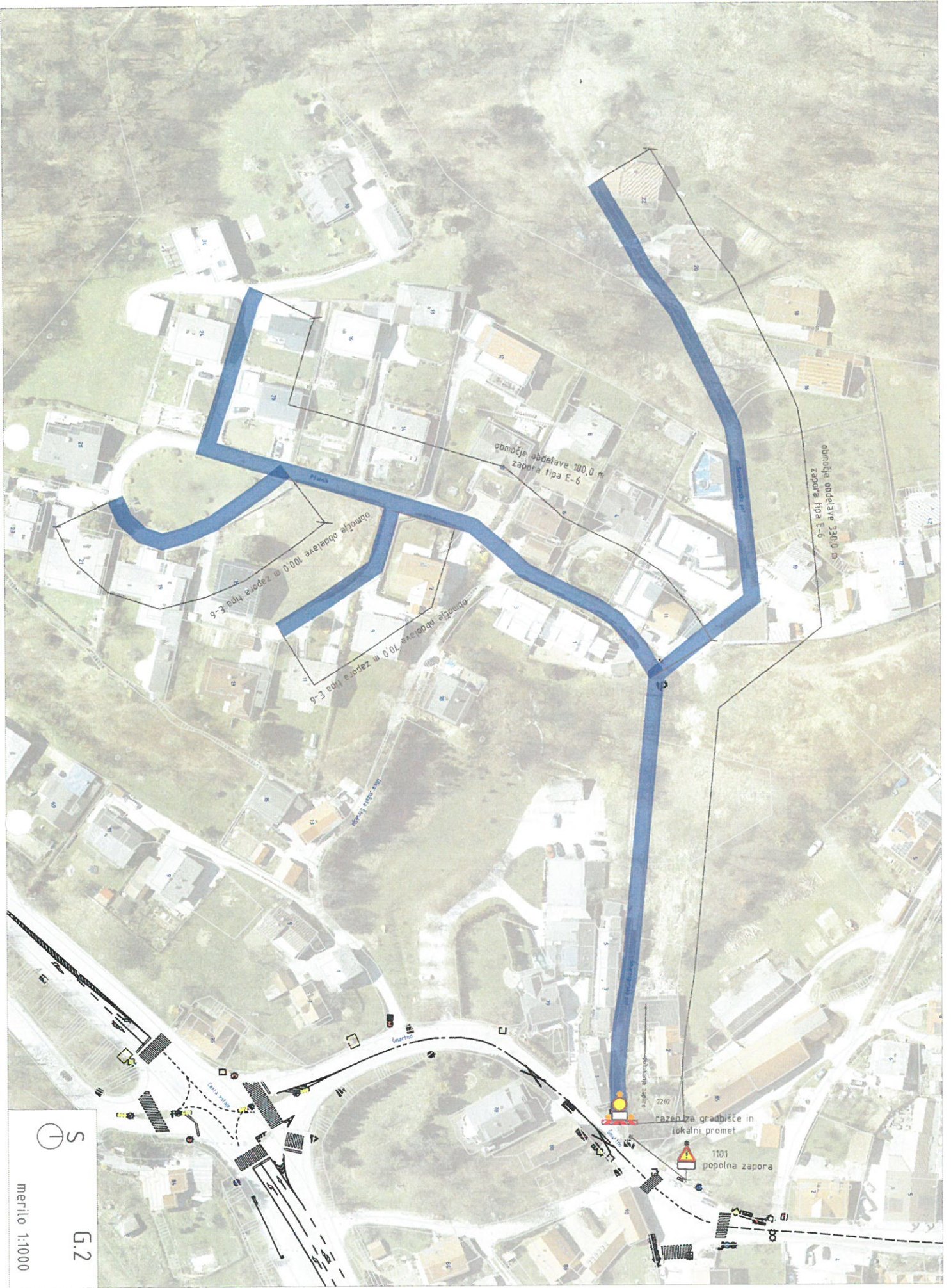
merilo 1:1000

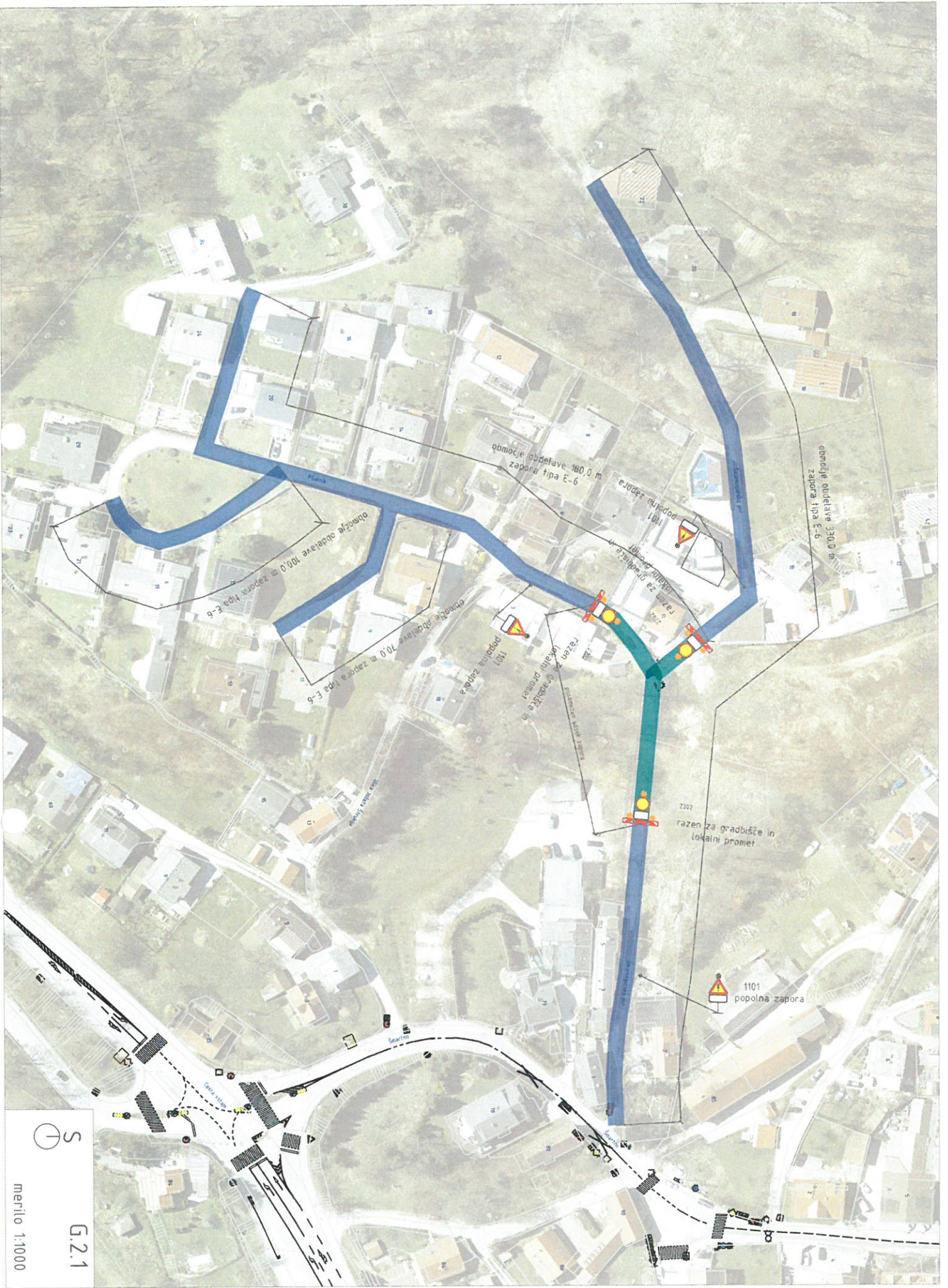
G.1.1



G.1.2

merilo 1:1000

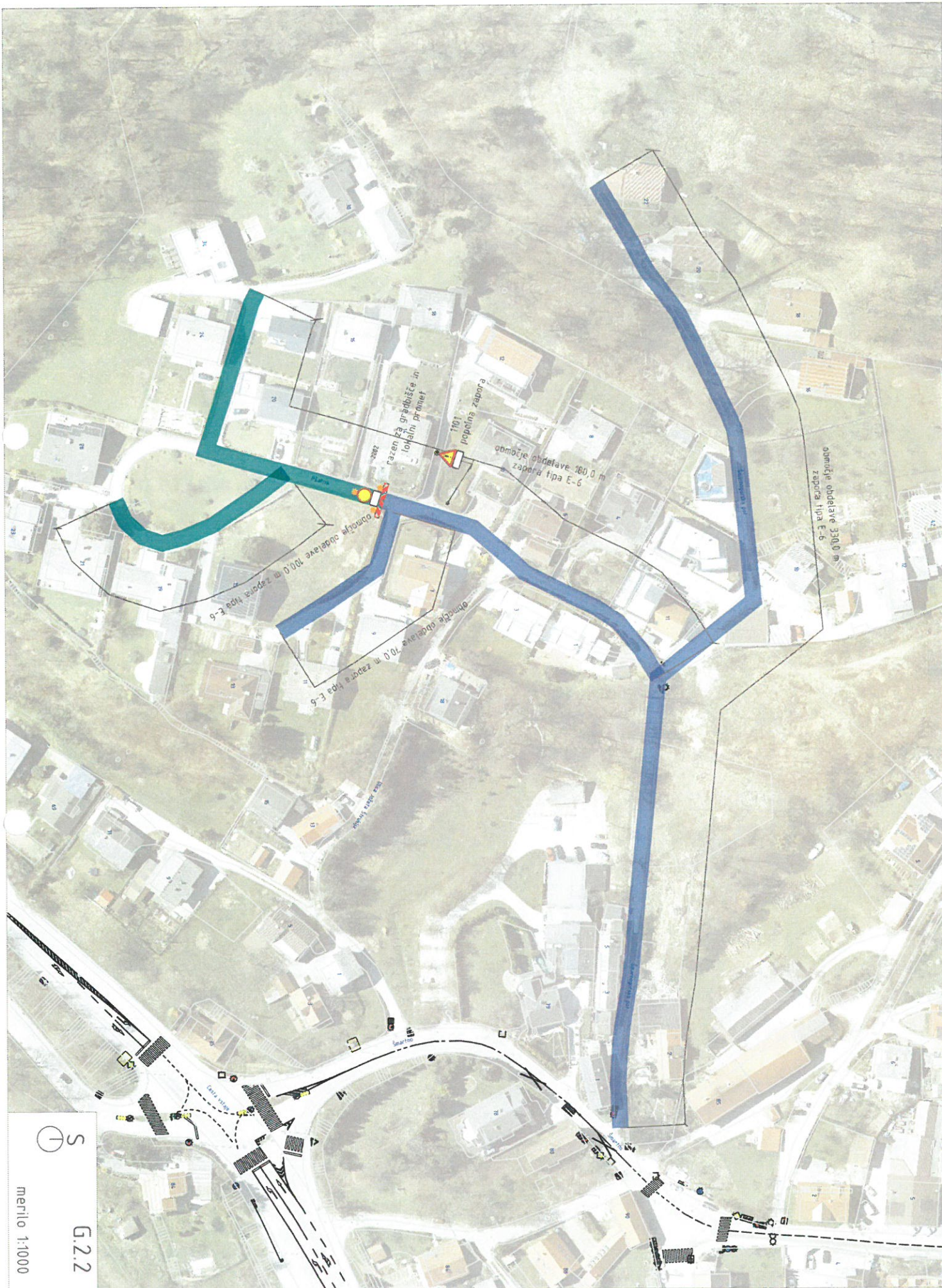


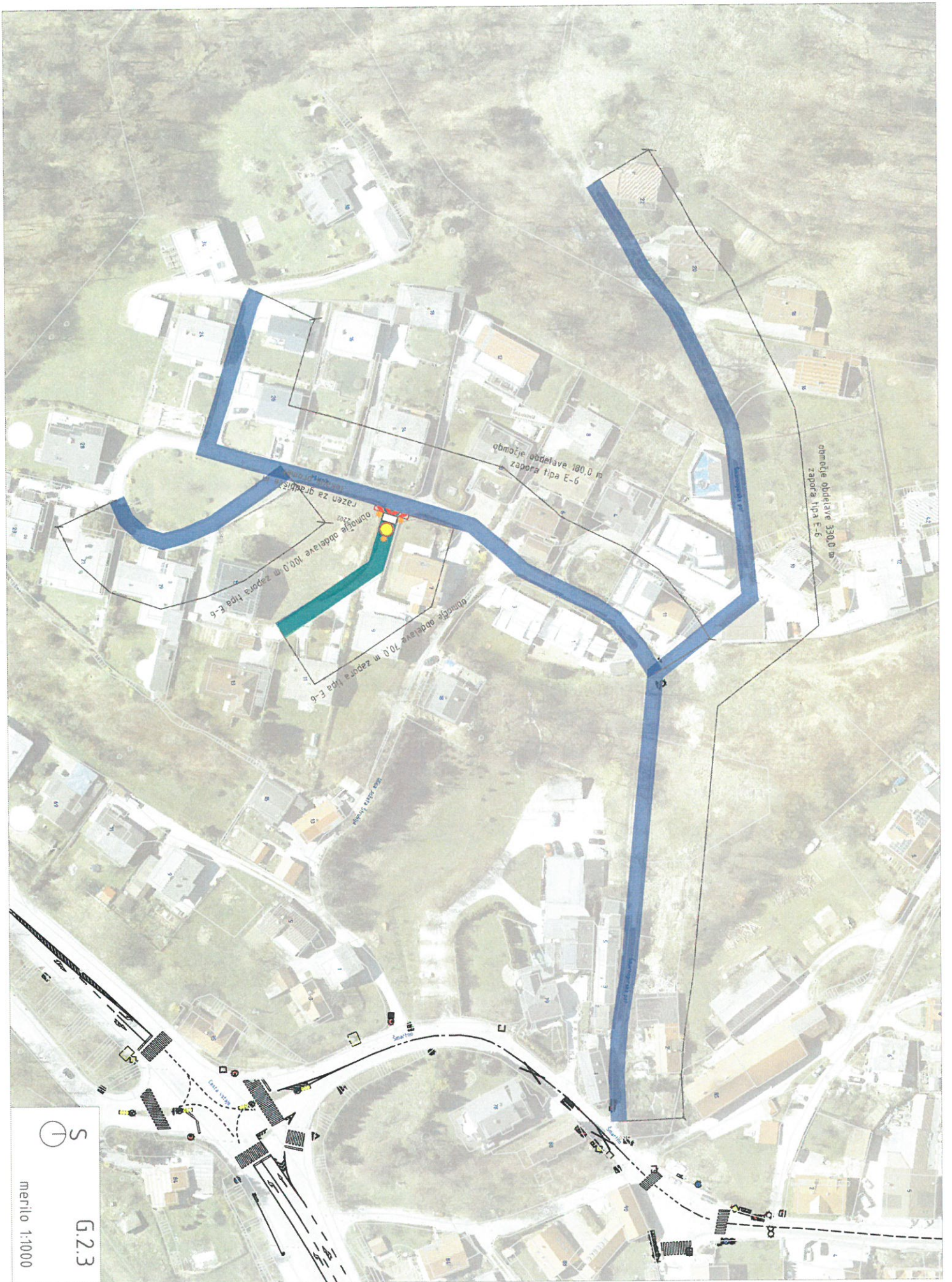


S

G.2.1

merilo 1:1000





območje obdelave 330,0 m  
zapora tipa E-6

območje obdelave 180,0 m  
zapora tipa E-6

razen za graditve  
območje obdelave 100,0 m  
zapora tipa E-6

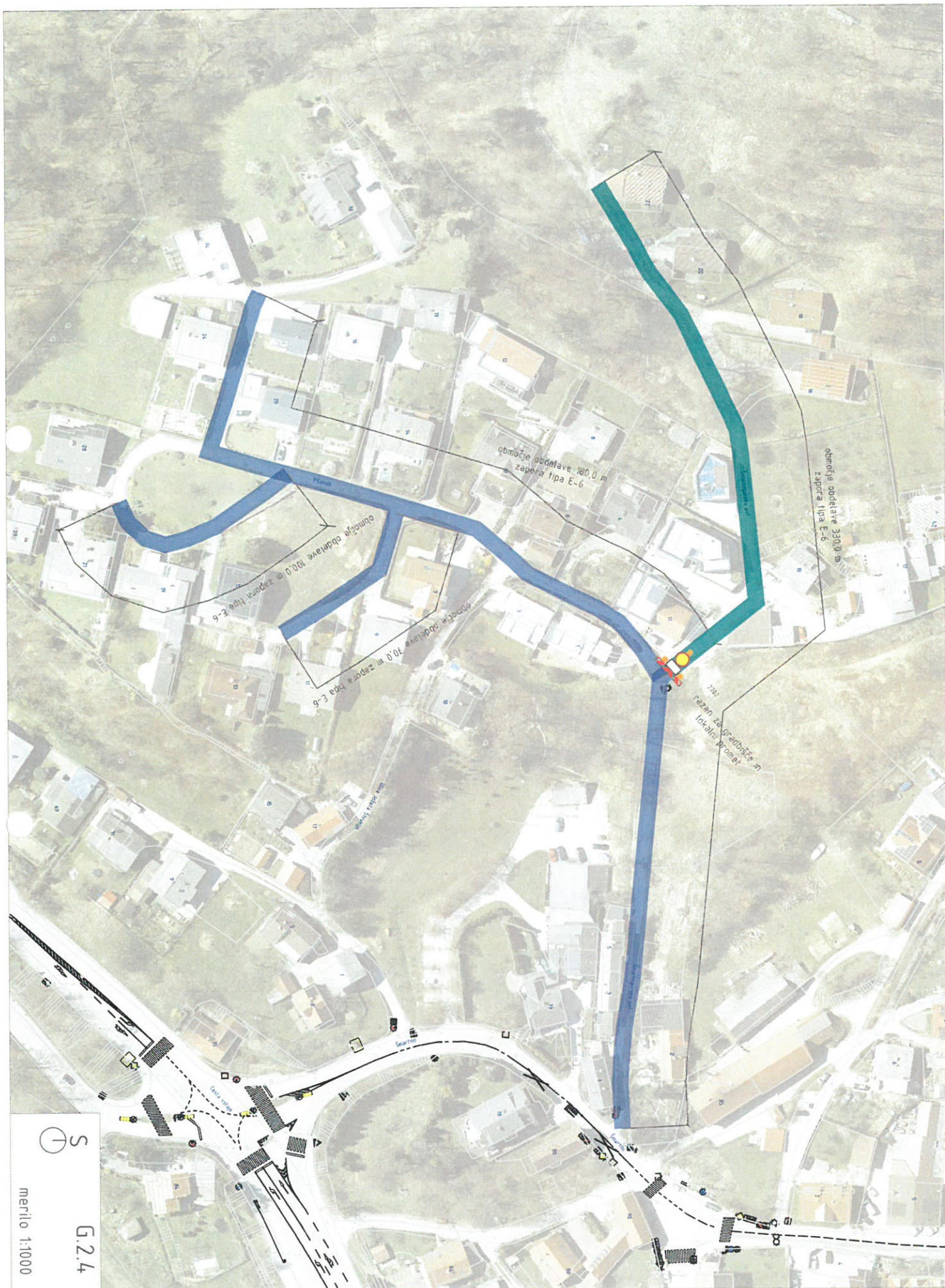
območje obdelave 70,0 m  
zapora tipa E-6



G.2.3

merilo 1:1000







območje obdelave 280,0 m zapora tipa E-6

območje obdelave 130,0 m zapora tipa E-6

razen za gradbišče in lokalni promet

razen za gradbišče in lokalni promet

popolna zapora

popolna zapora

popolna zapora



G.3

merilo 1:1000



merilo 1:1000

G.3.1

